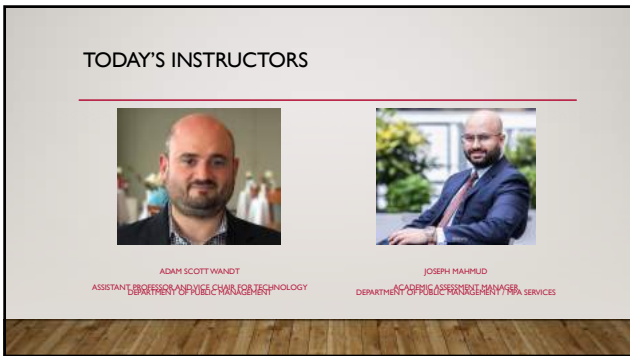
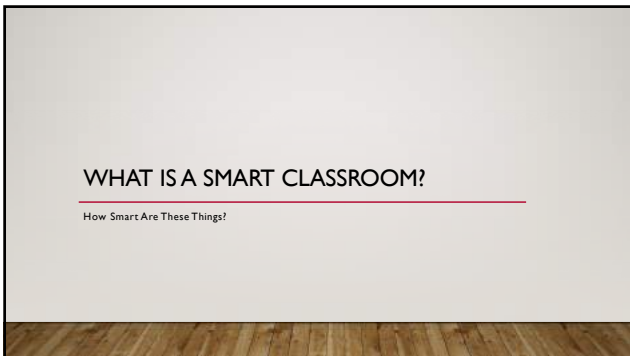




1



2



3

WHAT ARE THE MAIN COMPONENTS OF A SMART CLASSROOM?

- Smart Podium
 - Crestron Control Panel
 - Input Interface Panel
 - Windows PC (John Jay Net)
 - Laptop Input (VGA)
 - DVD / VCR
 - Audio Amplification System
 - AC Power
 - Ethernet
 - Audio Visual Input
- Room Wide Audio
- Whiteboard
- LCD Projector
- Projector Screen (Some Dual)
- WiFi
- Lighting Control
- AC Power for Student Laptops
- Video Conferencing (Some Classrooms)
- Emergency Assistance Phone

4

STANDARD INPUT PANEL

*Not All Classrooms Are Created Equal



5

CRESTRON CONTROL PANEL

Touch Screen Control With Some Hard Buttons



6



7



8



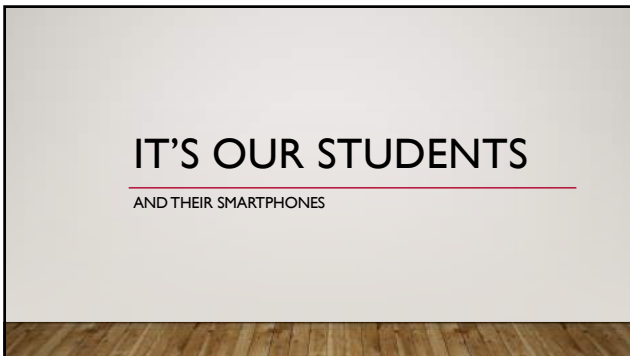
9



10



11



12

WHAT TO DO
WHEN
THINGS GO
WRONG?

BECAUSE IT WILL.....
EVENTUALLY



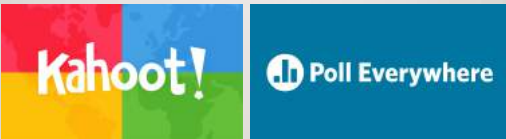
13

COMMON POINTS OF FAILURE

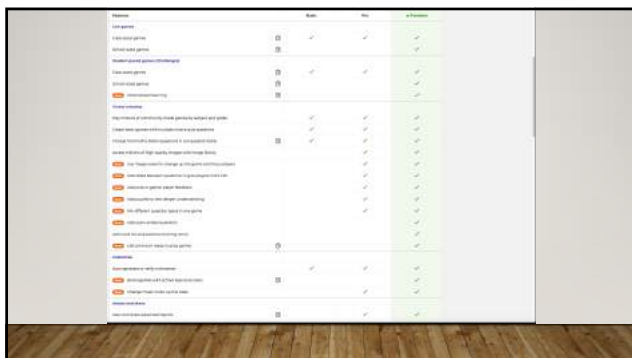
- WiFi / Internet Access
- Smart Podium Malfunction
- Dying / Dead Battery
- Software Won't Load
- Difficult / Not Prepared / Technophobic Student
- External / News / Stress

14

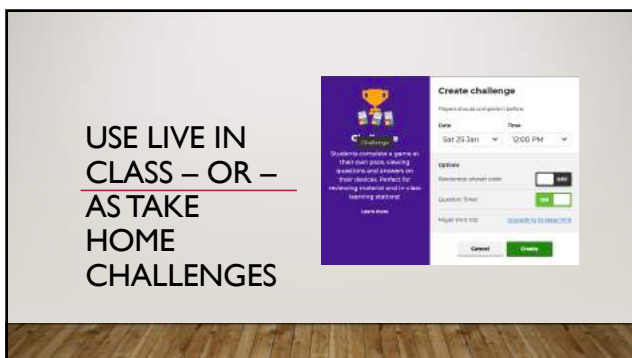
LET'S LOOK AT TWO FREE AND FUN
SMART TECHNOLOGIES



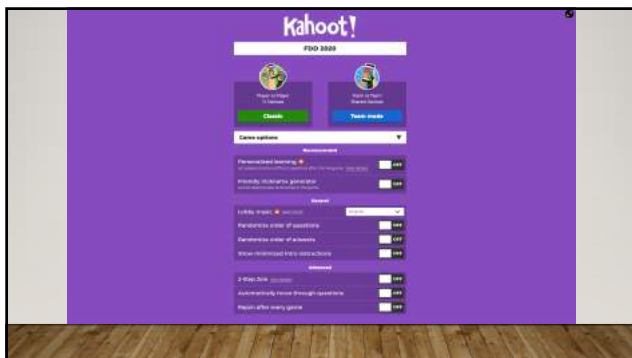
15



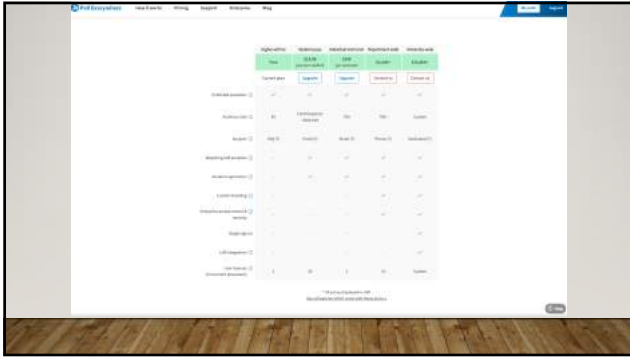
16



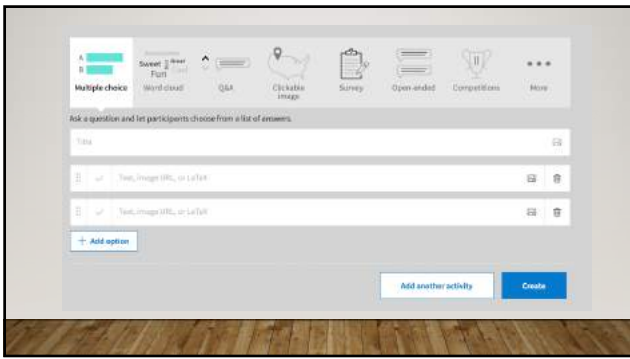
17



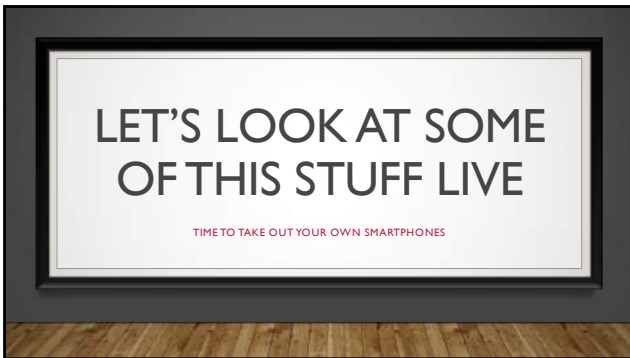
18



19



20



21



22
